

Reliability in Action



LG918

Wheel Loader



LG918 Wheel Loader

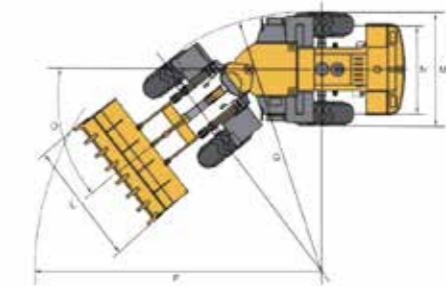
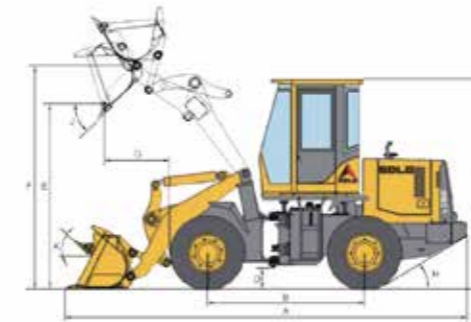
2 YEAR
000 HOUR
WARRANTY

The LG918 Loader offers outstanding versatility & performance. Packed with features designed to save operators time & increase productivity, this model is ideal for sand & soil yards, concrete batch plants, feedlots, material handling, farm use, waste recycling & general construction. With easy service access, excellent fuel economy & built-in comfort, the LG918 is your ideal choice.



- 1** Fully certified ROPS/FOPS air conditioned cab. The wrap around pillarless front & rear windscreens offer superior vision & safety. The cab interior is vast, with a focus on comfort, ergonomics & practicality.
- 2** SDLG uses axles designed & built at the factory, thus ensuring a perfect driveline match, resulting in increased productivity.
- 3** Machine comes standard with a quick hitch & general purpose bucket with a bolt on cutting edge, designed & built to increase productivity.

- 4** The engine is high torque, high performance & fuel efficient. It is connected to a tropical cooling package allowing it to work at full capacity in the toughest conditions.
- 5** The transmission is heavy duty, smooth & reliable. It provides superior productivity & is designed to work in all applications.



ITEM	SPECIFICATIONS
Overall Dimension	
L x W x H	5,748 x 2,140 x 2,920mm
Wheelbase (B)	2,260mm
Height to Top of Cabin (C)	2,920mm
Min Ground Clearance (D)	290mm
Max Dumping Height (E)	2,490mm
Lifting Height (F)	3,200mm
Dumping Distance (G)	920mm
Max Gradeability (H)	30°
Dumping Angle (J)	43°
Bucket Rollback at Ground Level (K)	44°
Bucket Width (L)	2,140mm
Overall Width - outside of rear wheel (M)	2,040mm
Wheel Tread (N)	1,630mm
Steering Angle (O)	35°
Horizontal Crossing Radius (P)	5,082mm
Min Turning Radius (Q)	4,546mm
Transmission System	
Torque Converter	Single-stage three-element hydraulic torque converter
Transmission Type	Fixedshaft power shift + high/low speed
Gears	Two forward two reverse
Speed at Forward Gear I	0~10km/h
Speed at Forward Gear II	0~26.5km/h
Speed at Reverse Gear I	0~9.6km/h
Speed at Reverse Gear II	0~25km/h
Hydraulic System	
Type	Hydraulic pilot control
Total Time	≤9.1s
System Pressure	2,538psi

ITEM	SPECIFICATIONS
Engine	
Model	YC4D80-T20
Type	4 Cylinder, water-cooled, four-stroke, direct injection
Rated Power @ Speed	77hp/58Kw@2,400r/min
Engine Displacement	4,214mL
Max Torque	270Nm
Emission Standard	TIER II
Min Fuel Consumption	5.5L/hr@2,400rpm
Brake System	
Service Brake Type	Dry disc brake on 4 wheels
Parking Brake Type	Manual internal expanding shoe brake
Steering System	
Type	Fully hydraulic articulated
Overall Parameter	
Bucket Capacity	1.0m³
Rated Load	1,800kg
Operating Weight	6,200kg
Max Tractive Force	>56kN
Max Breakout Force	>58kN
FTSTL	3,600kg
Fill Capacity	
Fuel	120L
Hydraulic Oil	100L
Engine	13L
Transmission	20L
Drive Axle	2x10L
Brake System	4L

**Under our policy of continuous improvement, we reserve the right to change specifications and design without prior notice.*

Lower Cost, Higher Return





Call 1300 887 530
Visit www.sdlg.com.au
Email enquiries@sdlg.com.au

**A VOLVO OWNED
COMPANY**



SDLG was introduced to Australia in 2010 when CJD Equipment was appointed as the National Distributer. Having proven itself in regions around the world, SDLG was poised for success down under with a strong value offering backed by CJD's seasoned dealer network. The introduction of SDLG as an affordable, value based product with simple but reliable technology proved successful, and significant growth has been achieved for the company in Australia since.

With 17 branches and a network of 20 service & support agents, we're able to offer Nationwide sales & support coverage from Darwin to Launceston, Perth to Mackay & everywhere in between.

Head Office
54 Great Eastern Highway
South Guildford, WA 6055

Visit www.cjd.com.au
Call 1300 139 804
Email marketing@cjd.com.au

[Facebook.com/cjdequipment](https://www.facebook.com/cjdequipment)
 [Linkedin.com/company/cjd-equipment](https://www.linkedin.com/company/cjd-equipment)
 [Instagram.com/cjd_equipment](https://www.instagram.com/cjd_equipment)