

Reliability in Action

L946H WHEEL LOADER

Operating Weight: 13,455kg
Engine Power: 129kW / 173hp
Bucket Capacity: 2.3m³





Combining reliability & efficiency in tough applications

The SDLG L946H wheel loader is extremely durable, with a small turning radius and heavy load capacity, making it well-suited for heavy load and bulk material handling applications. The L946H features an optimised frame and boom structure for increased stability, manoeuvrability and high performance in the most demanding environments.

GREATER RELIABILITY

Featuring a high torque, fuel efficient Weichai Tier 3 engine, the L946H delivers powerful performance with superior reliability, and extended maintenance intervals for reduced running costs. The L946H boom and loader frame have been structurally optimised with enhanced axles designed jointly between Volvo and SDLG to significantly improve service life, stability and driving force in tough applications.

EASY TO MAINTAIN

The combination of the Weichai engine, and quality machine components, in addition to SDLG's uniquely designed TP170 F2/R1 transmission, provides ultimate reliability and efficiency with an improved machine service life. The opening angle of the engine hood is easily accessible with grouped filters for simple maintenance.

HIGHLY EFFICIENT

The hydraulic system has advanced sealing technology, combined with higher working pressures which increases efficiency and productivity. The L946H also features a responsive load sensing steering system and tropical cooling package for a reliable operating experience.

ULTIMATE VERSATILITY

The L946H is equipped with a 2.3m³ GP bucket as standard. Bucket profiles are also precisely matched with the loader's geometry, combined with a hydraulic quick coupler and full-powered, third-function hydraulics for ultimate versatility.

OPERATOR COMFORT

The H-Series cab is ergonomically designed with a curved front windscreen for better vision, more space, and improved sealing for greater comfort and reduced noise. Extra air vents also contribute to an enhanced operator experience, and the cab is ROPS/FOPS certified for safety.



Main Parameter



50 YEARS OF RELIABILITY

SDLG is an internationally renowned brand spanning 130 countries, and over 50 years of equipment manufacturing expertise.



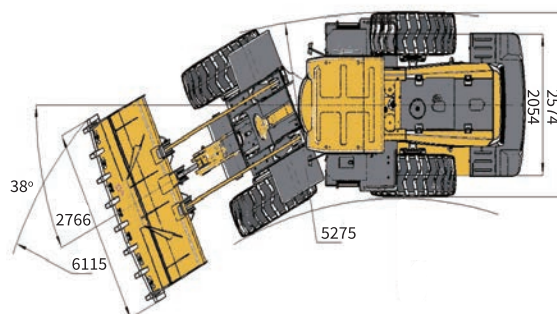
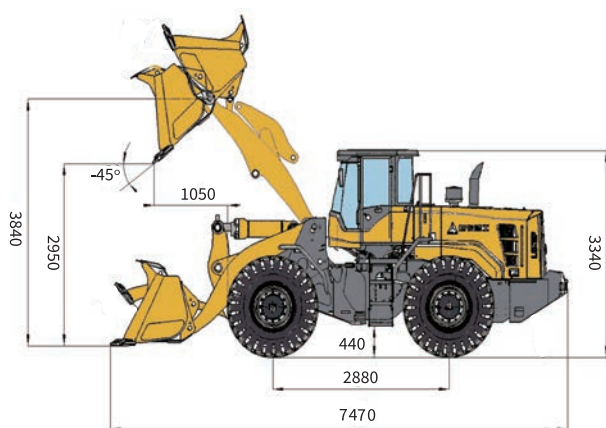
MEMBER OF THE VOLVO GROUP SINCE 2007

SDLG machinery integrates the design influence and quality control standards of Volvo.



3 YEAR / 6,000 HOUR WARRANTY*

Backed nationally by CJD Equipment's extensive branch and SDLG dealer network.



ITEM	SPECIFICATIONS
OVERALL PARAMETER	
Operating weight	13,455 kg
Rated load	4,000 kg
Length	7,470 mm
Width	2,766 mm
Height	3,340 mm
Bucket capacity	2.3 m ³
Max. tractive force	120 kN
Max. breakout force	≥125 kN
Tipping load	≥80 kN
ENGINE	
Rated power @ speed (kW@r/min)	129 @ 2000
Maximum torque @ speed (Nm@r/min)	680 @ (1400-1600)
Emission standard	Tier III
STEERING SYSTEM	
System pressure	14 Mpa

ITEM	SPECIFICATIONS
HYDRAULIC SYSTEM	
System pressure	16 Mpa
Total cycle time (bucket lift & dump & fall)	≤ 10.2 s
TRANSMISSION SYSTEM	
Transmission type	Planetary power shift
Gears	F2 & R1
Speed	0-36 km/h
FILL CAPACITY	
Fuel	200 L
Hydraulic oil	141 L
Engine	18 L
Transmission	44 L
Drive axle	26 L + 26 L
Braking system	2 L

*The right of final interpretation of the above mentioned parameters shall be reserved by SDLG. No further notice will be given in case of any change. Illustrations in the text may not always be the standard illustrations for this model.

Equipment & Features

STANDARD EQUIPMENT

ENGINE

Weichai WP6G175E201 engine	SDLG transmission
Air pre-filter	Tropical cooling package
Multi-stage fuel filter	Engine fan guard

ELECTRICAL

Centralised fuses	Work lights
Back-up alarm	Rotating beacon
3rd function connector	

UNDERCARRIAGE

SDLG enhanced axle	17.5-25 tyre
--------------------	--------------

ATTACHMENTS

2.3 m³ GP bucket with BOCE	Quick coupler
----------------------------	---------------

CAB & INTERIOR

Single joystick pilot control	ROPS/FOPS cabin
Rocker switches	Air conditioning / Heater
Adjustable steering column	Digital instrument display
Radio	Suspension seat



OPTIONAL EQUIPMENT

ELECTRICAL

LED work lights

ENGINE

Oil bath air filter	Air intake pre-heating
---------------------	------------------------

UNDERCARRIAGE

17.5-25-12pr block pattern tyre	17.5-R25 radial tyre
Tyre chain	License plate bracket

CAB & INTERIOR

Rear view camera

ATTACHMENTS

Pallet fork A	2m³ rock bucket B
1.8m³ - 3m³ light material bucket C	



Founded in 1974, CJD Equipment is a privately-owned Australian company and leading provider of world class equipment and trucks. Offering a diverse range of products from iconic brands such as Volvo CE and SDLG, CJD's branch and SDLG dealer network spans the country, with 24/7 sales, parts and service support from over 600 highly experienced staff.

Head Office

54 Great Eastern Highway
South Guildford WA 6055

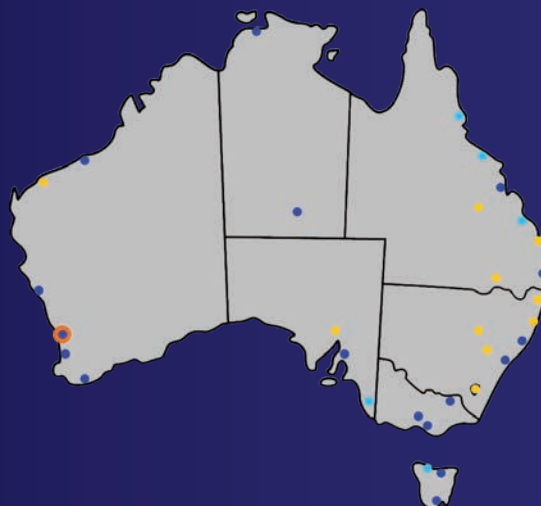
enquiries@cjed.com.au

cjed.com.au

1300 139 804

Find us on socials   

BIG ENOUGH TO TRUST SMALL ENOUGH TO CARE



SDLG L946H (09-2023)
Australian Version