

Reliability in Action

L936HLA WHEEL LOADER

Operating Weight: 11,925kg
Engine Power: 105kW / 141hp
Bucket Capacity: 1.8m³





Ultimate durability & reliability

The SDLG L936HLA is powerful, yet highly efficient loader suitable for small to medium sized material handling and general construction applications. This loader has a long arm as standard for greater reach, and an extensive range of attachments are available for ultimate versatility.

POWERFUL & ROBUST

The L936HLA chassis and loader frame have been structurally enhanced to improve service life, stability and productivity. The rear axle oscillates and has a greater load capacity for increased driving force in tough applications. Bucket profiles are also precisely matched with the loader's geometry to provide greater working efficiency.

GREATER RELIABILITY

Featuring a high torque, fuel efficient Weichai Tier 3 engine, the L936HLA delivers powerful performance with superior reliability, and extended maintenance intervals for reduced running costs. The opening angle of the engine hood is also easily accessible with grouped filters for simplified servicing.

OPTIMISED HYDRAULICS

The hydraulic system has advanced sealing technology, combined with higher working pressures which increases efficiency and productivity. The L936HLA also features a responsive load sensing steering system and tropical cooling package for a reliable operating experience.

HIGHER EFFICIENCY

The combination of the Weichai engine, quality machine components, and SDLG's uniquely designed F2/R1 power shift transmission, enables ultimate durability and reliability in all applications for an improved machine service life.

OPERATOR COMFORT

The H-Series cab is ergonomically designed with a curved front windscreen for better vision, more space, and improved sealing for greater comfort and reduced noise. Extra air vents also contribute to an enhanced operator experience, and the cab is ROPS/FOPS certified for safety.



Main Parameter



50 YEARS OF RELIABILITY

SDLG is an internationally renowned brand spanning 130 countries, and over 50 years of equipment manufacturing expertise.



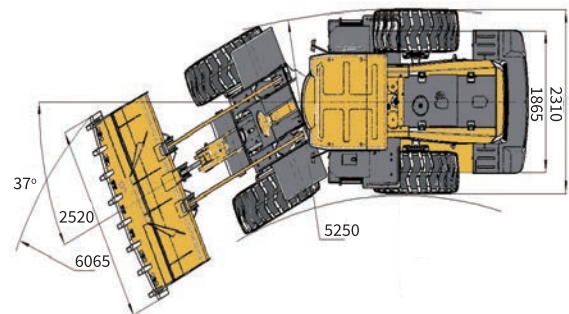
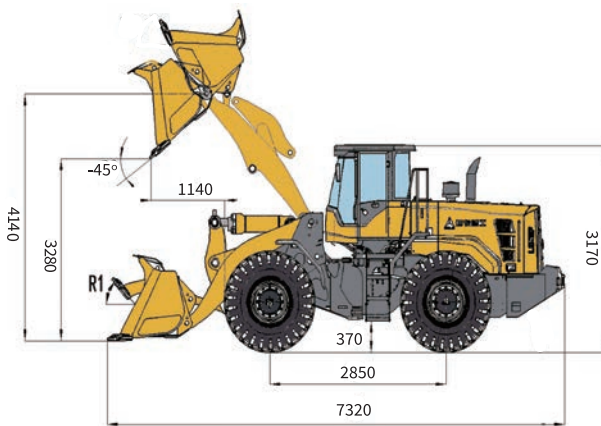
MEMBER OF THE VOLVO GROUP SINCE 2007

SDLG machinery integrates the design influence and quality control standards of Volvo.



3 YEAR / 6,000 HOUR WARRANTY*

Backed nationally by CJD Equipment's extensive branch and SDLG dealer network.



ITEM	SPECIFICATIONS
OVERALL PARAMETER	
Operating weight	11,925 kg
Rated load	3,000 kg
Length	7,320 mm
Width	2,520 mm
Height	3,170 mm
Bucket capacity	1.8 m ³
Max. tractive force	100 kN
Max. breakout force	≥82 kN
Tipping load	≥66 kN
ENGINE	
Rated power @ speed (kW@r/min)	105 @ 2000
Maximum torque @ speed (Nm@r/min)	660 @ (1400-1600)
Emission standard	Tier III
STEERING SYSTEM	
System pressure	12 Mpa

ITEM	SPECIFICATIONS
HYDRAULIC SYSTEM	
System pressure	17.5 Mpa
Total cycle time (bucket lift & dump & fall)	≤ 9.2 s
TRANSMISSION SYSTEM	
Transmission type	Planetary power shift
Gears	F2 & R1
Speed	0-38 km/h
FILL CAPACITY	
Fuel	200 L
Hydraulic oil	128 L
Engine	18 L
Transmission	44 L
Drive axle	28 L + 28 L
Braking system	2 L

*The right of final interpretation of the above mentioned parameters shall be reserved by SDLG. No further notice will be given in case of any change. Illustrations in the text may not always be the standard illustrations for this model.

Equipment & Features

STANDARD EQUIPMENT

ENGINE

Weichai WP6G175E201 engine	SDLG transmission
Air pre-filter	Tropical cooling package
Multi-stage fuel filter	

ELECTRICAL

Centralised fuses	Work lights
Back-up alarm	Rotating beacon
3rd function connector	

UNDERCARRIAGE

SDLG enhanced axle	17.5-25 tyre
--------------------	--------------

ATTACHMENTS

1.8m ³ GP bucket with BOCE	Quick coupler
---------------------------------------	---------------

CAB & INTERIOR

Single joystick pilot control	ROPS/FOPS cabin
Rocker switches	Air conditioning / Heater
Adjustable steering column	Digital instrument display
Radio	Suspension seat



OPTIONAL EQUIPMENT

ELECTRICAL

LED work lights

ENGINE

Oil bath air filter	Air intake pre-heating
---------------------	------------------------

UNDERCARRIAGE

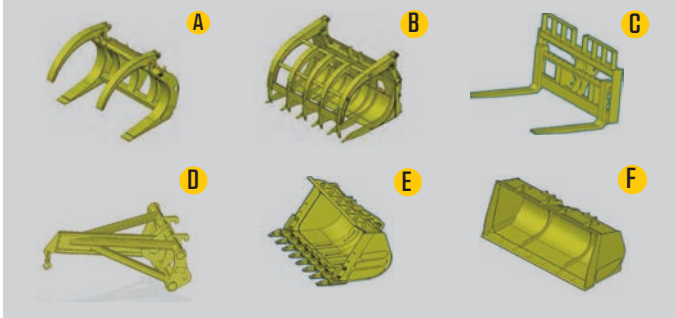
17.5-25-12pr block pattern tyre	17.5-R25 radial tyre
Tyre chain	License plate bracket

CAB & INTERIOR

Rear view camera

ATTACHMENTS

Log grapple A	Grass gripper B
Pallet fork C	Crane arm D
Super long reach arm	1.5m ³ - 1.8m ³ rock bucket E
1.8m ³ - 3m ³ light material bucket F	



Founded in 1974, CJD Equipment is a privately-owned Australian company and leading provider of world class equipment and trucks. Offering a diverse range of products from iconic brands such as Volvo CE and SDLG, CJD's branch and SDLG dealer network spans the country, with 24/7 sales, parts and service support from over 600 highly experienced staff.

Head Office

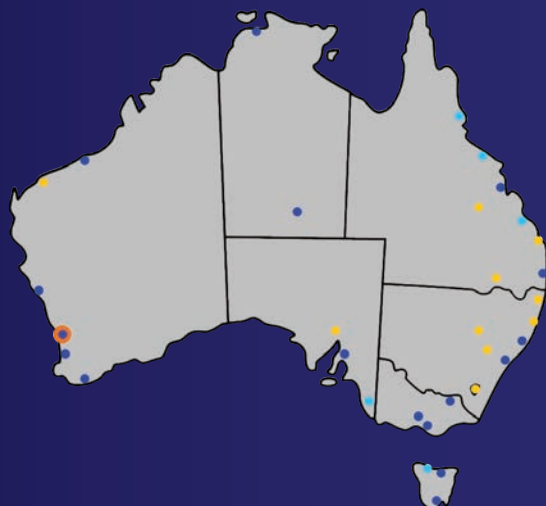
54 Great Eastern Highway
South Guildford WA 6055

enquiries@cjdequipment.com.au

cjdequipment.com.au

1300 139 804

Find us on socials



BIG ENOUGH TO TRUST SMALL ENOUGH TO CARE

SDLG L936HLA (09-2023)
Australian Version