

Reliability in Action

L958F WHEEL LOADER

Operating Weight: 17,560kg
Engine Power: 162kW / 217hp
Bucket Capacity: 3.0m³





Engineered for high productivity

The L958F combines reliability, versatility and high performance making this loader an excellent choice for Australian operations. With a 3m³ bucket and powerful high torque engine, the L958F is engineered for high productivity and is well-suited to quarries, material handling, farm use and general construction applications.

ULTIMATE RELIABILITY

Featuring a powerful and efficient Deutz 6 cylinder engine, matched with a uniquely designed SDLG transmission for maximum torque from the engine to the wheels, the L958F delivers outstanding performance. This loader also features a tropical cooling package for a more efficient, productive, and reliable operating experience.

HIGHER EFFICIENCY

The L958F has a high breakout force, a rated load of 5,000kg and a 3m³ bucket for improved efficiency and productivity. The loader comes standard with a Volvo compatible quick hitch, and a wide range of attachments are available for maximum versatility.

EASY TO MAINTAIN

The design of the L958F ensures that service and maintenance can be handled easily, with optimised maintenance intervals for improved productivity. Excellent easy to access check points are located throughout the machine with the opening angle of the engine hood enabling simplified service and maintenance.

POWERFUL & ROBUST

The transmission is heavy-duty, smooth and reliable, and incorporates a kick-down function for increased productivity in all applications. SDLG also uses axles designed and built at the factory on the L958F to ensure a perfect driveline match.

OPERATOR COMFORT

The L958F cab is ergonomically designed with a curved, pillarless front windscreen for superior vision and more space. The interior is focused on comfort and practicality. The single joystick operation guarantees precise, easy and comfortable operation of the loader arm and bucket, reducing operator fatigue. The cab is also air conditioned and ROPS/FOPS certified for safety.



Main Parameter



50 YEARS OF RELIABILITY

SDLG is an internationally renowned brand spanning 130 countries, and over 50 years of equipment manufacturing expertise.



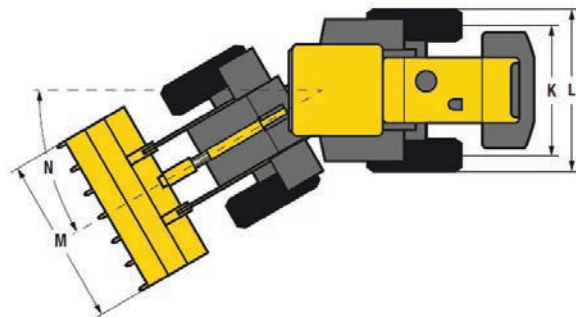
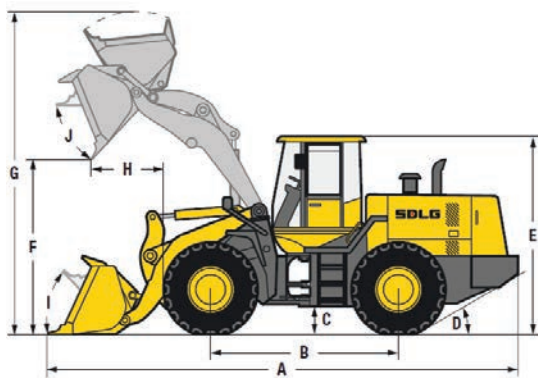
MEMBER OF THE VOLVO GROUP SINCE 2007

SDLG machinery integrates the design influence and quality control standards of Volvo.



3 YEAR / 6,000 HOUR WARRANTY*

Backed nationally by CJD Equipment's extensive branch and SDLG dealer network.



ITEM	SPECIFICATIONS
OVERALL PARAMETER	
Operating weight	17,560 kg
Rated load	5,000 kg
Width	3,016 mm
Height	3,450 mm
Bucket capacity	3.0 m ³
Max. tractive force	165 kN
Max. breakout force	≥150 kN
FTSTL	10,000 kg
STEERING SYSTEM	
Type	Fully hydraulic articulated
DIMENSIONS	
A. Overall length	8,360 mm
B. Wheel base	3,300 mm
C. Ground clearance min.	420 mm
D. Max gradeability	28°
E. Overall height to top of cab	3,450 mm
F. Dump height max.	2,945mm
G. Overall operating height	4,170 mm
H. Dumping distance	1,250 mm
I. Roll back angle ground level	45°
J. Dumping angle	45°
K. Wheel tread	2,190 mm

ITEM	SPECIFICATIONS
L. Width over tyres	2,785 mm
M. Bucket width	3,016 mm
N. Steering angle	38°
ENGINE	
Rated power @ speed (kW@r/min)	162 @ 2200
Maximum torque	980 kN
Emission standard	Tier III
HYDRAULIC SYSTEM	
System pressure	2,828 psi
Total cycle time (bucket lift & dump & fall)	≤ 10 s
TRANSMISSION SYSTEM	
Transmission type	VRT 200 power shift
Gears	F4 & R4
Speed	0-38 km/h
FILL CAPACITY	
Fuel	300 L
Hydraulic oil	240 L
Engine	20 L
Transmission	22 L
Drive axle	50 L + 46 L
Braking system	4 L

*The right of final interpretation of the above mentioned parameters shall be reserved by SDLG. No further notice will be given in case of any change. Illustrations in the text may not always be the standard illustrations for this model.

Equipment & Features

STANDARD EQUIPMENT

ENGINE

Deutz 7.7L 6 cylinder engine	SDLG transmission
Air pre-filter	Tropical cooling package
Multi-stage fuel filter	

ELECTRICAL

Centralised fuses	Work lights
Back-up alarm	Rotating beacon
3rd function connector	

UNDERCARRIAGE

Full hydraulic wet disc brakes	23.5-25 L3 tyres
--------------------------------	------------------

ATTACHMENTS

3.0m ³ GP bucket	Quick coupler
-----------------------------	---------------

CAB & INTERIOR

Single lever hydraulic pilot control	ROPS/FOPS cabin
Rocker switches	Air conditioning / Heater
Adjustable steering column	

OPTIONAL EQUIPMENT

ELECTRICAL

LED work lights

ENGINE

Oil bath air filter	Air intake pre-heating
---------------------	------------------------

UNDERCARRIAGE

Tyre chain	License plate bracket
------------	-----------------------

CAB & INTERIOR

Rear view camera



Founded in 1974, CJD Equipment is a privately-owned Australian company and leading provider of world class equipment and trucks. Offering a diverse range of products from iconic brands such as Volvo CE and SDLG, CJD's branch and SDLG dealer network spans the country, with 24/7 sales, parts and service support from over 600 highly experienced staff.

Head Office

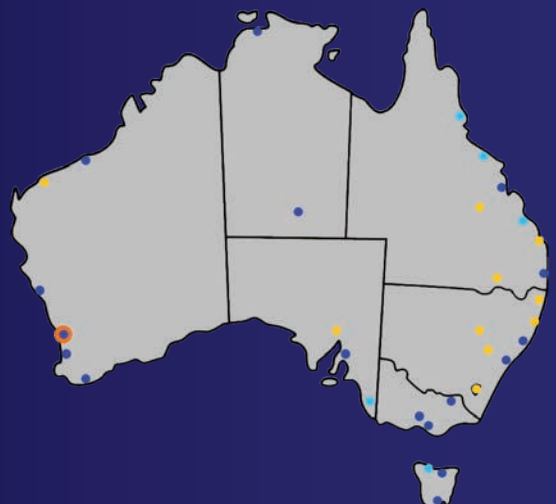
54 Great Eastern Highway
South Guildford WA 6055

enquiries@cjed.com.au

cjed.com.au

1300 139 804

Find us on socials [f](#) [@](#) [in](#)



BIG ENOUGH TO TRUST SMALL ENOUGH TO CARE

SDLG L958F (09-2023)

Australian Version